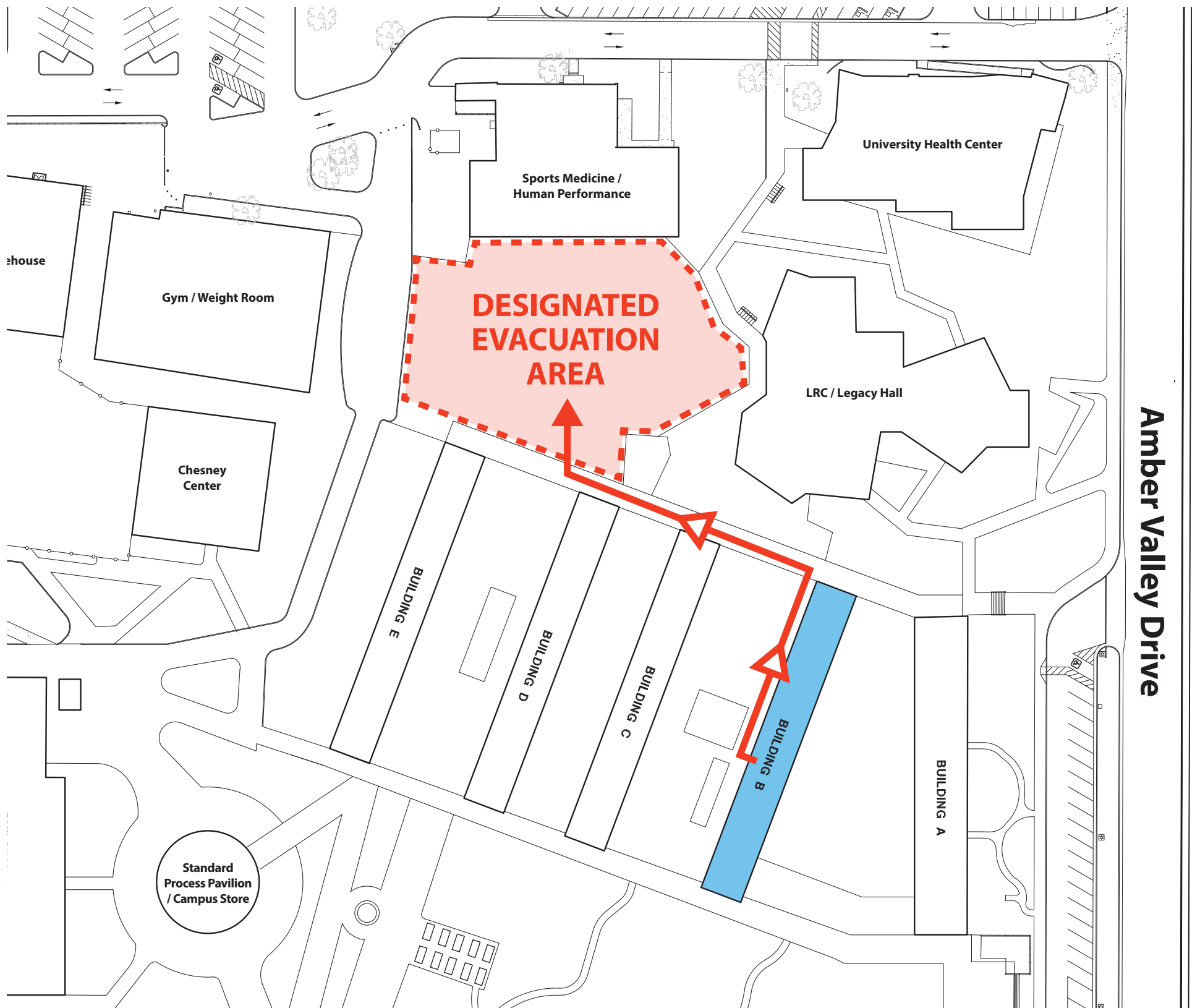


## Remain at least 25' away from buildings and other objects

- In an emergency situation evacuate the buildings and proceed to the designated evacuation area
- Proceed to the designated evacuation area safely and group together according to building letter
- In an emergency situation take emergency supply kits from your building to evacuation area
- If safe, assist individuals that may have mobility/accessibility issues to evacuation area
- All persons must notify emergency personnel and building coordinator(s) if leaving the evacuation area or campus before an "all clear" has been given
- Campus Safety will notify the building coordinators when it is safe to return to your building

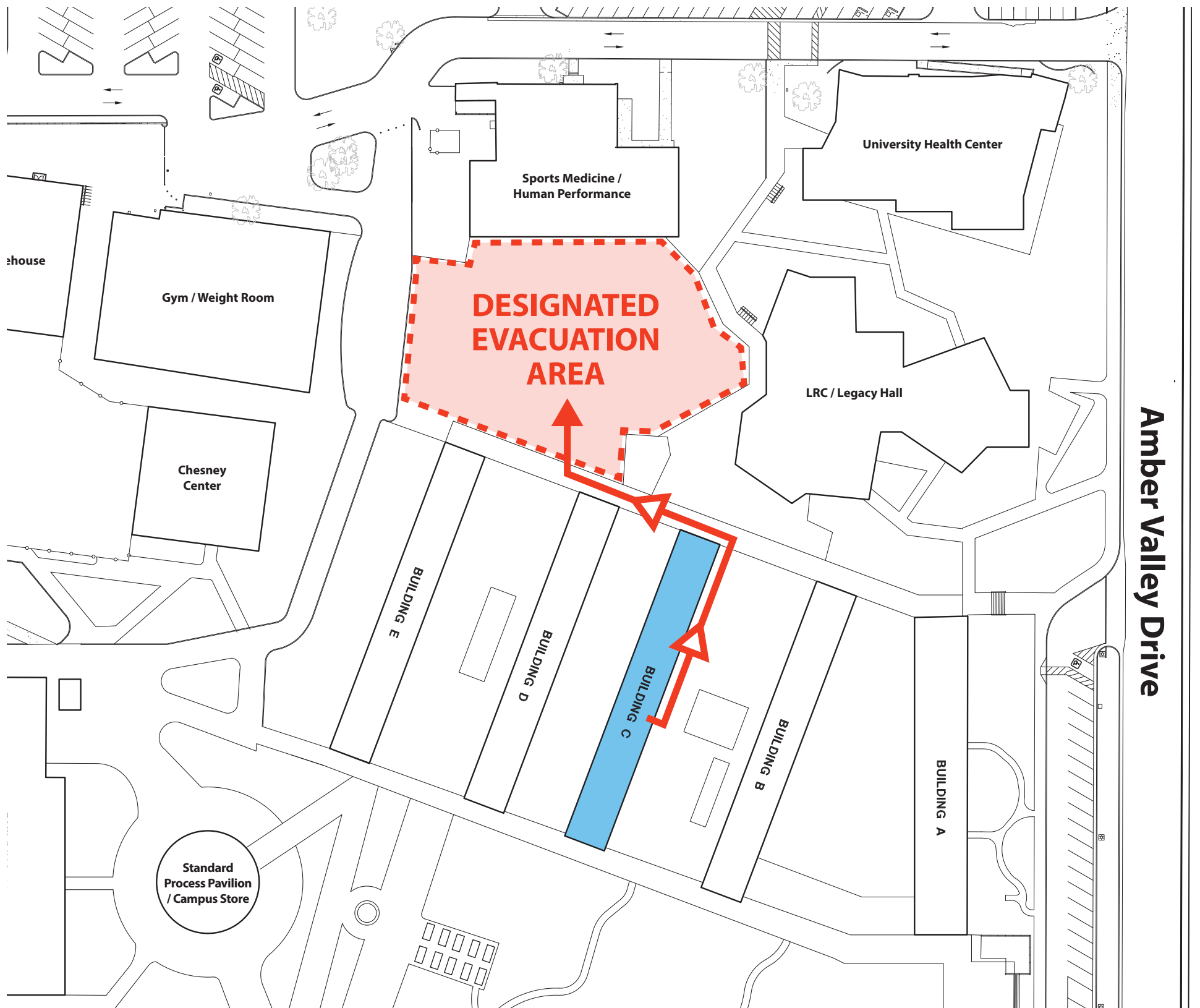




## Remain at least 25' away from buildings and other objects

- In an emergency situation evacuate the buildings and proceed to the designated evacuation area
- Proceed to the designated evacuation area safely and group together according to building letter
- In an emergency situation take emergency supply kits from your building to evacuation area
- If safe, assist individuals that may have mobility/accessibility issues to evacuation area
- All persons must notify emergency personnel and building coordinator(s) if leaving the evacuation area or campus before an "all clear" has been given
- Campus Safety will notify the building coordinators when it is safe to return to your building

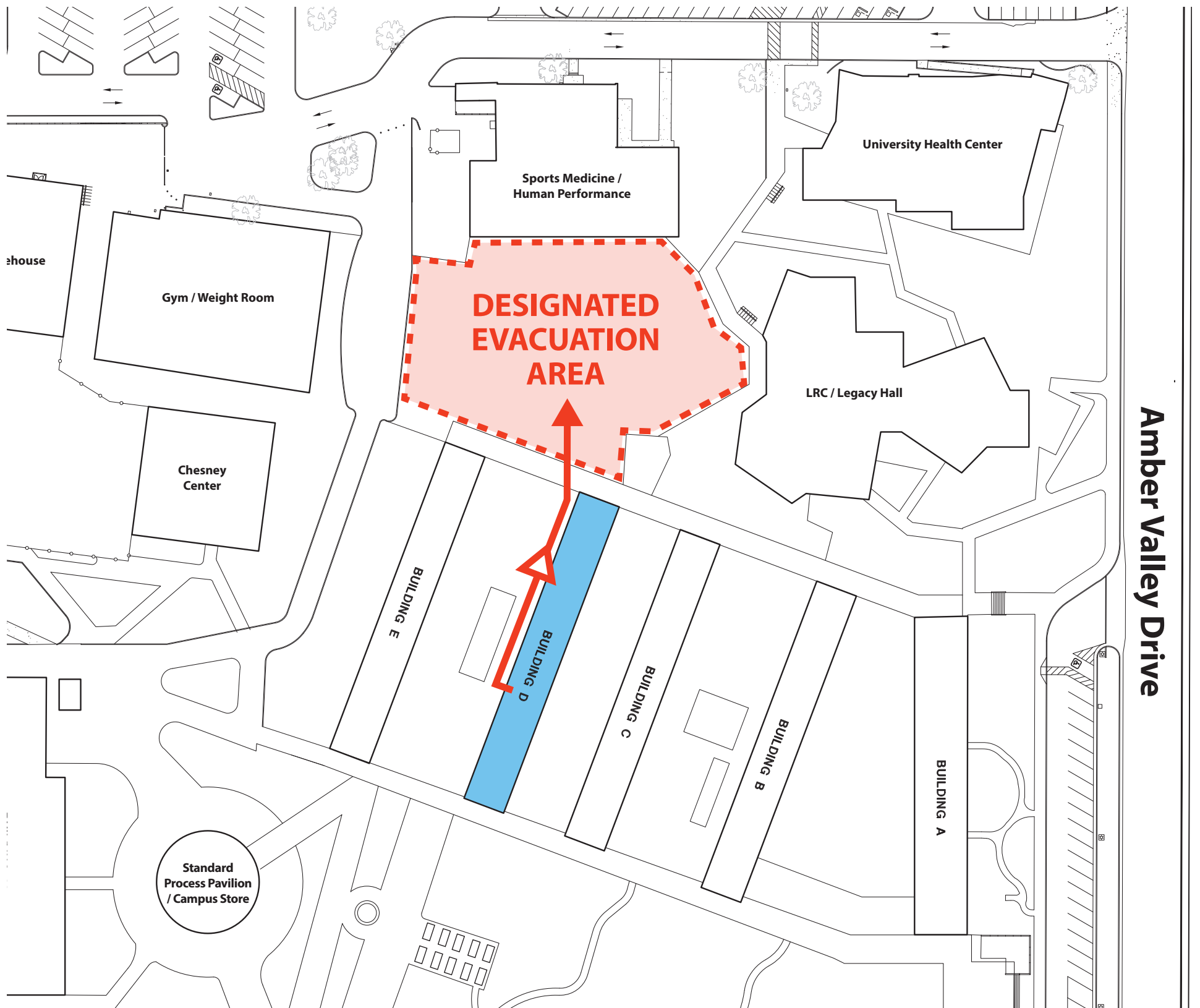




## Remain at least 25' away from buildings and other objects

- In an emergency situation evacuate the buildings and proceed to the designated evacuation area
- Proceed to the designated evacuation area safely and group together according to building letter
- In an emergency situation take emergency supply kits from your building to evacuation area
- If safe, assist individuals that may have mobility/accessibility issues to evacuation area
- All persons must notify emergency personnel and building coordinator(s) if leaving the evacuation area or campus before an "all clear" has been given
- Campus Safety will notify the building coordinators when it is safe to return to your building



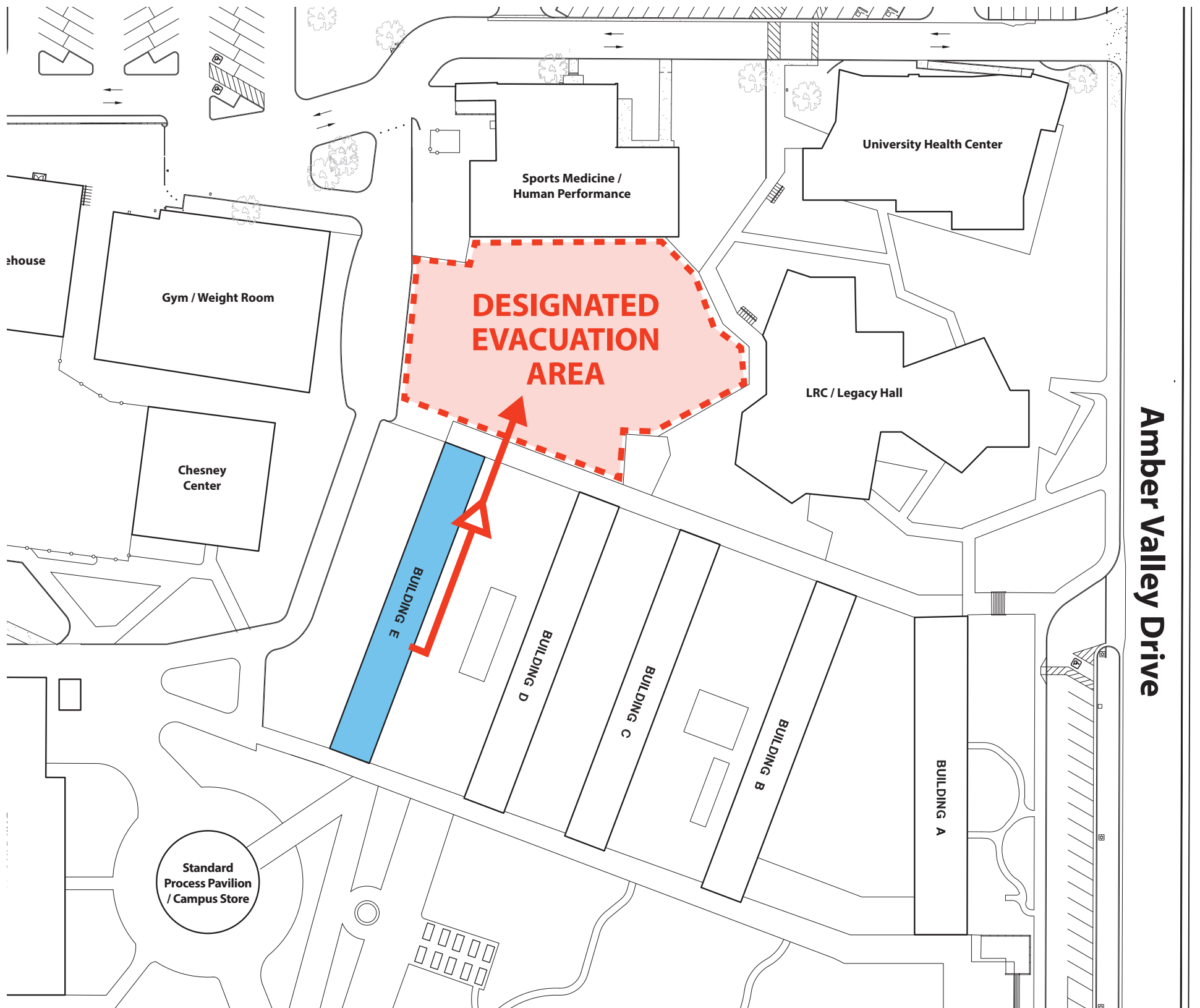


## Remain at least 25' away from buildings and other objects

- In an emergency situation evacuate the buildings and proceed to the designated evacuation area
- Proceed to the designated evacuation area safely and group together according to building letter
- In an emergency situation take emergency supply kits from your building to evacuation area
- If safe, assist individuals that may have mobility/accessibility issues to evacuation area
- All persons must notify emergency personnel and building coordinator(s) if leaving the evacuation area or campus before an "all clear" has been given
- Campus Safety will notify the building coordinators when it is safe to return to your building



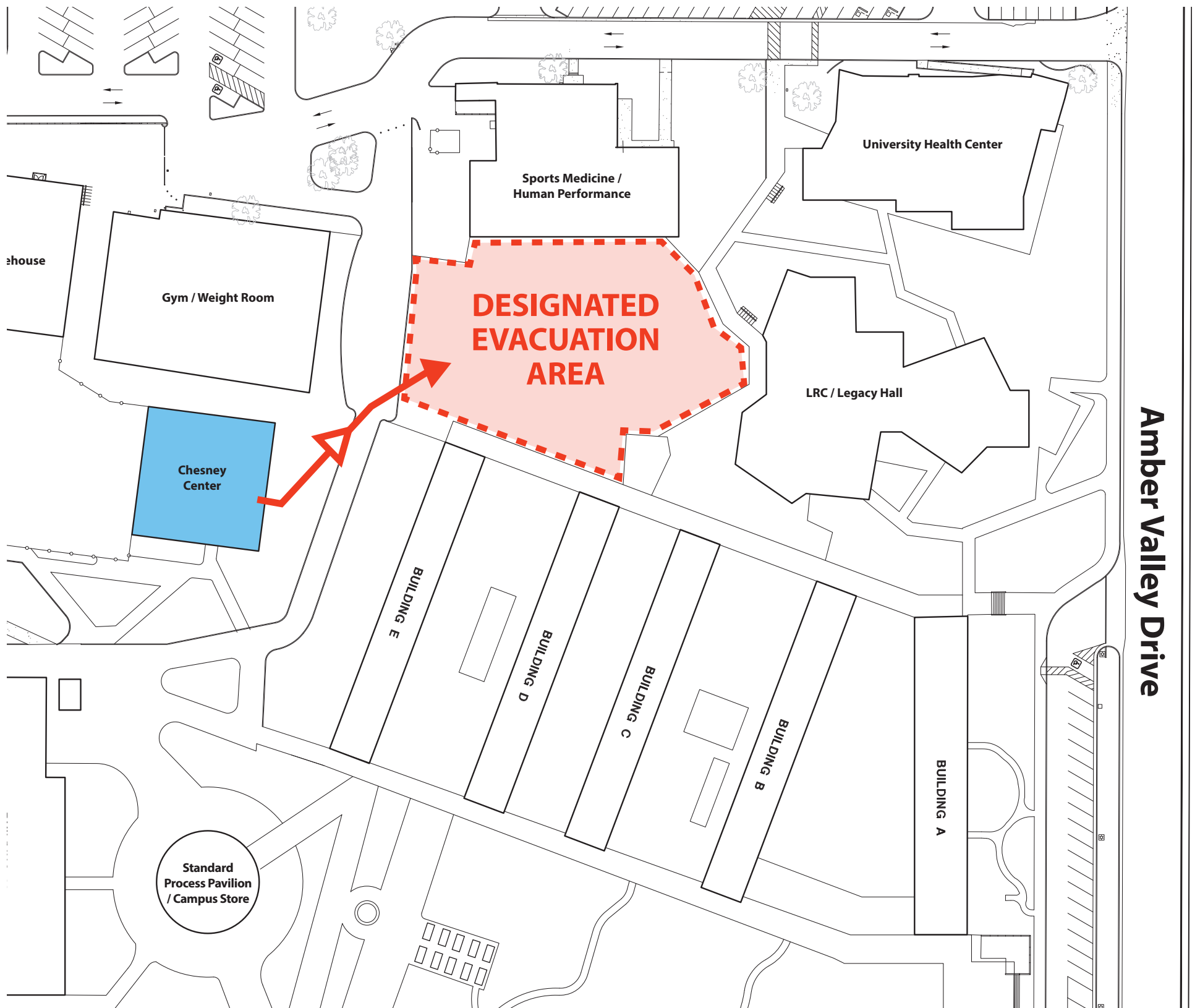




## Remain at least 25' away from buildings and other objects

- In an emergency situation evacuate the buildings and proceed to the designated evacuation area
- Proceed to the designated evacuation area safely and group together according to building letter
- In an emergency situation take emergency supply kits from your building to evacuation area
- If safe, assist individuals that may have mobility/accessibility issues to evacuation area
- All persons must notify emergency personnel and building coordinator(s) if leaving the evacuation area or campus before an "all clear" has been given
- Campus Safety will notify the building coordinators when it is safe to return to your building

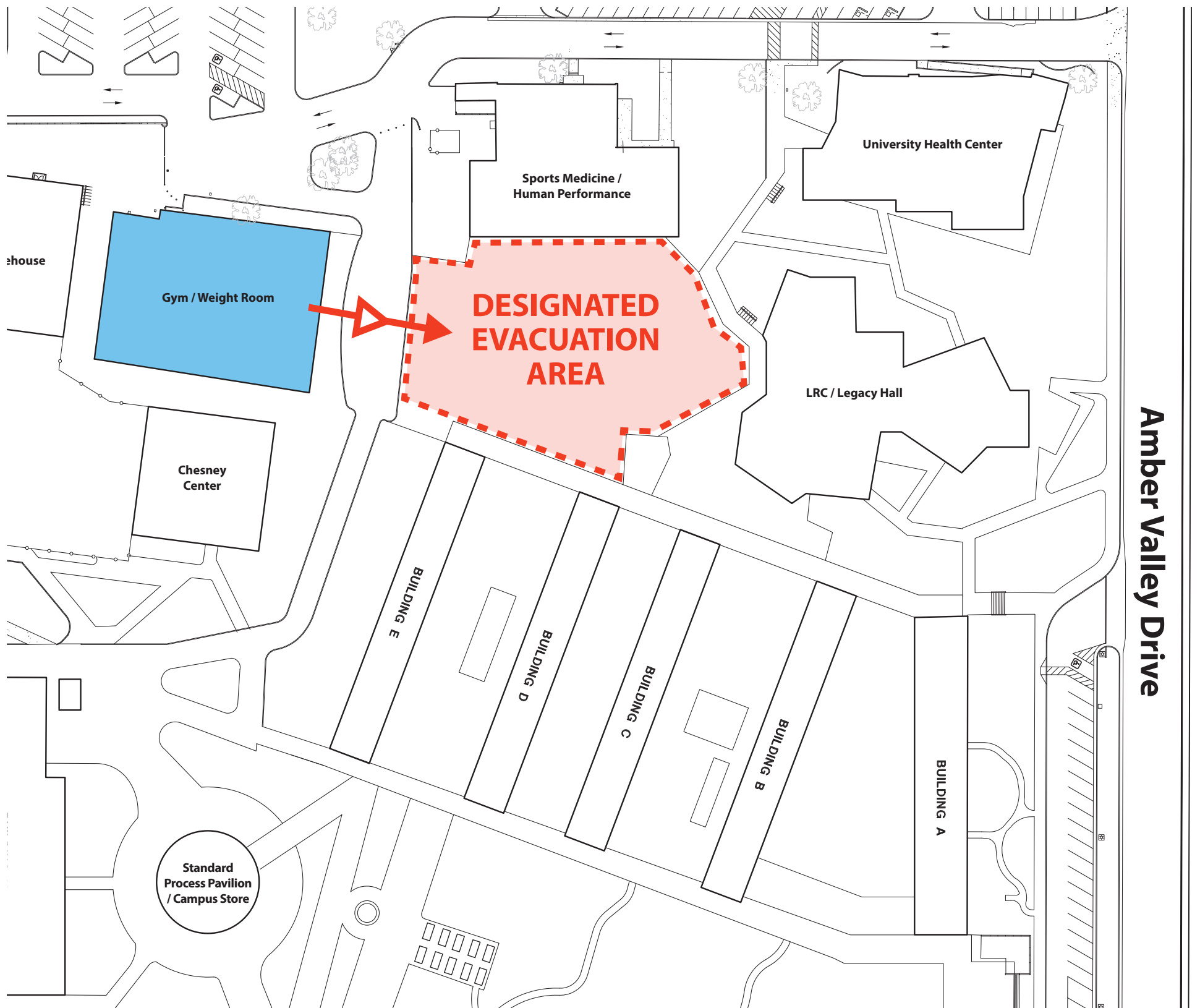




## Remain at least 25' away from buildings and other objects

- In an emergency situation evacuate the buildings and proceed to the designated evacuation area
- Proceed to the designated evacuation area safely and group together according to building letter
- In an emergency situation take emergency supply kits from your building to evacuation area
- If safe, assist individuals that may have mobility/accessibility issues to evacuation area
- All persons must notify emergency personnel and building coordinator(s) if leaving the evacuation area or campus before an "all clear" has been given
- Campus Safety will notify the building coordinators when it is safe to return to your building

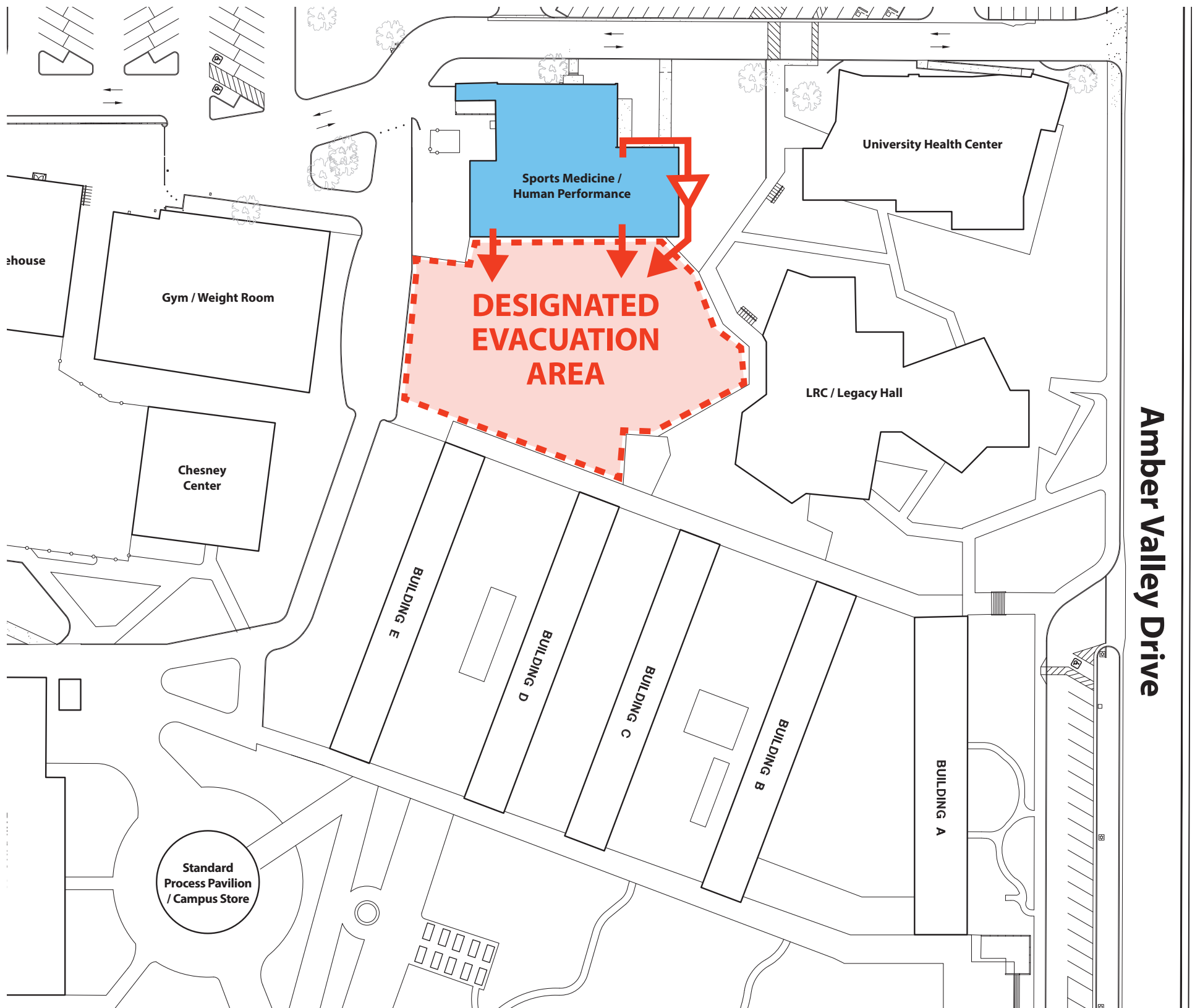




## Remain at least 25' away from buildings and other objects

- In an emergency situation evacuate the buildings and proceed to the designated evacuation area
- Proceed to the designated evacuation area safely and group together according to building letter
- In an emergency situation take emergency supply kits from your building to evacuation area
- If safe, assist individuals that may have mobility/accessibility issues to evacuation area
- All persons must notify emergency personnel and building coordinator(s) if leaving the evacuation area or campus before an "all clear" has been given
- Campus Safety will notify the building coordinators when it is safe to return to your building



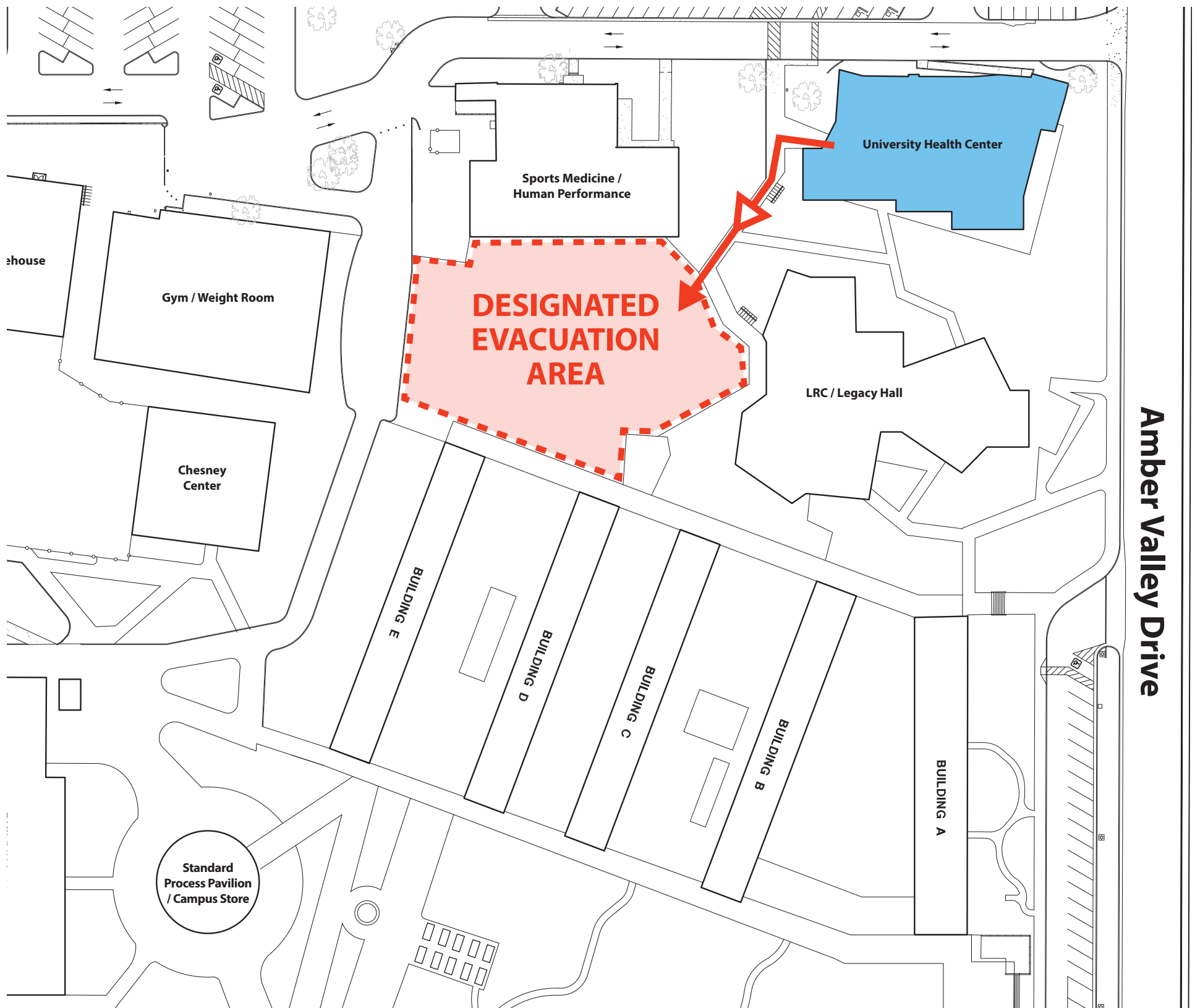


## Remain at least 25' away from buildings and other objects

- In an emergency situation evacuate the buildings and proceed to the designated evacuation area
- Proceed to the designated evacuation area safely and group together according to building letter
- In an emergency situation take emergency supply kits from your building to evacuation area
- If safe, assist individuals that may have mobility/accessibility issues to evacuation area
- All persons must notify emergency personnel and building coordinator(s) if leaving the evacuation area or campus before an "all clear" has been given
- Campus Safety will notify the building coordinators when it is safe to return to your building



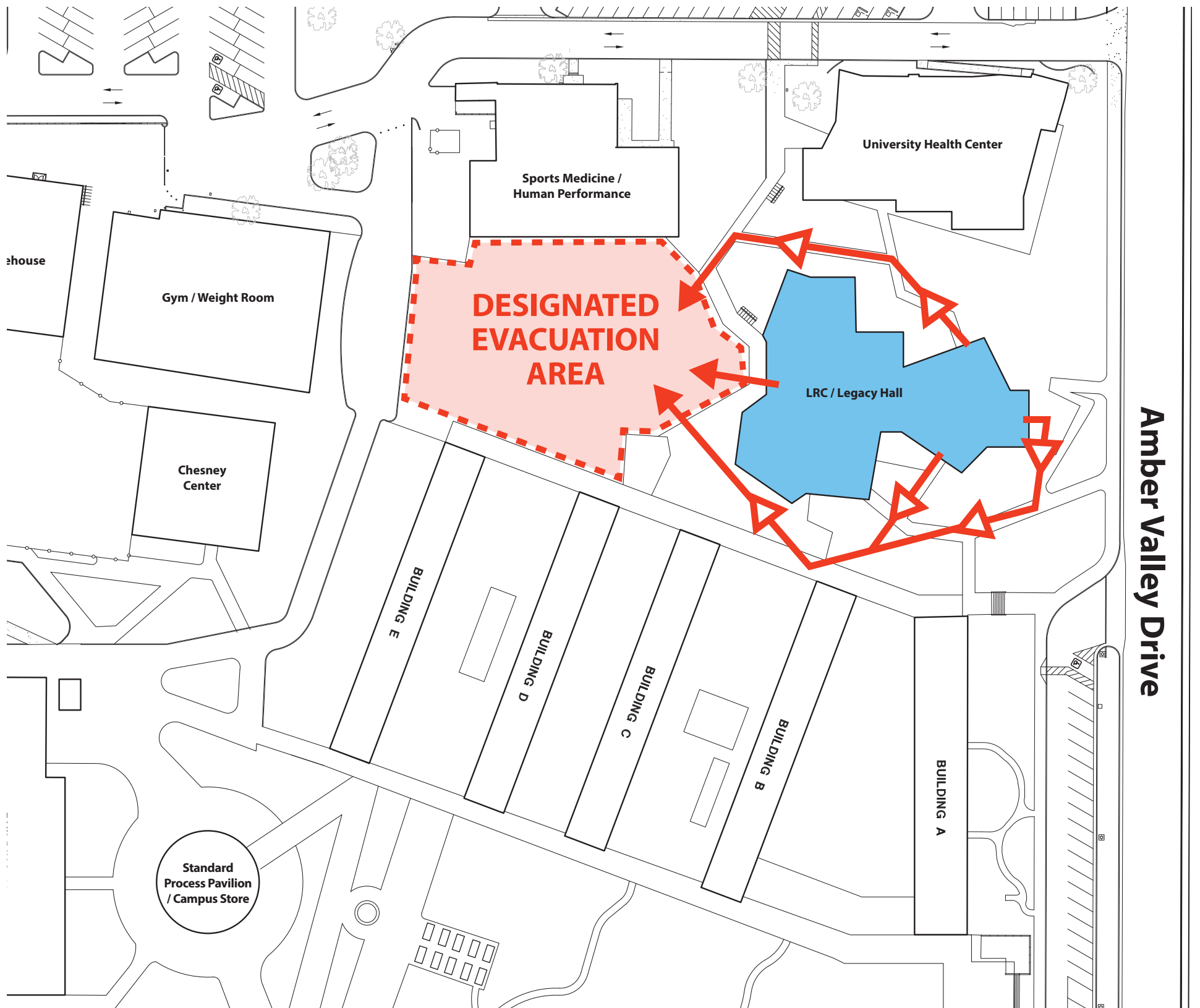




## Remain at least 25' away from buildings and other objects

- In an emergency situation evacuate the buildings and proceed to the designated evacuation area
- Proceed to the designated evacuation area safely and group together according to building letter
- In an emergency situation take emergency supply kits from your building to evacuation area
- If safe, assist individuals that may have mobility/accessibility issues to evacuation area
- All persons must notify emergency personnel and building coordinator(s) if leaving the evacuation area or campus before an "all clear" has been given
- Campus Safety will notify the building coordinators when it is safe to return to your building

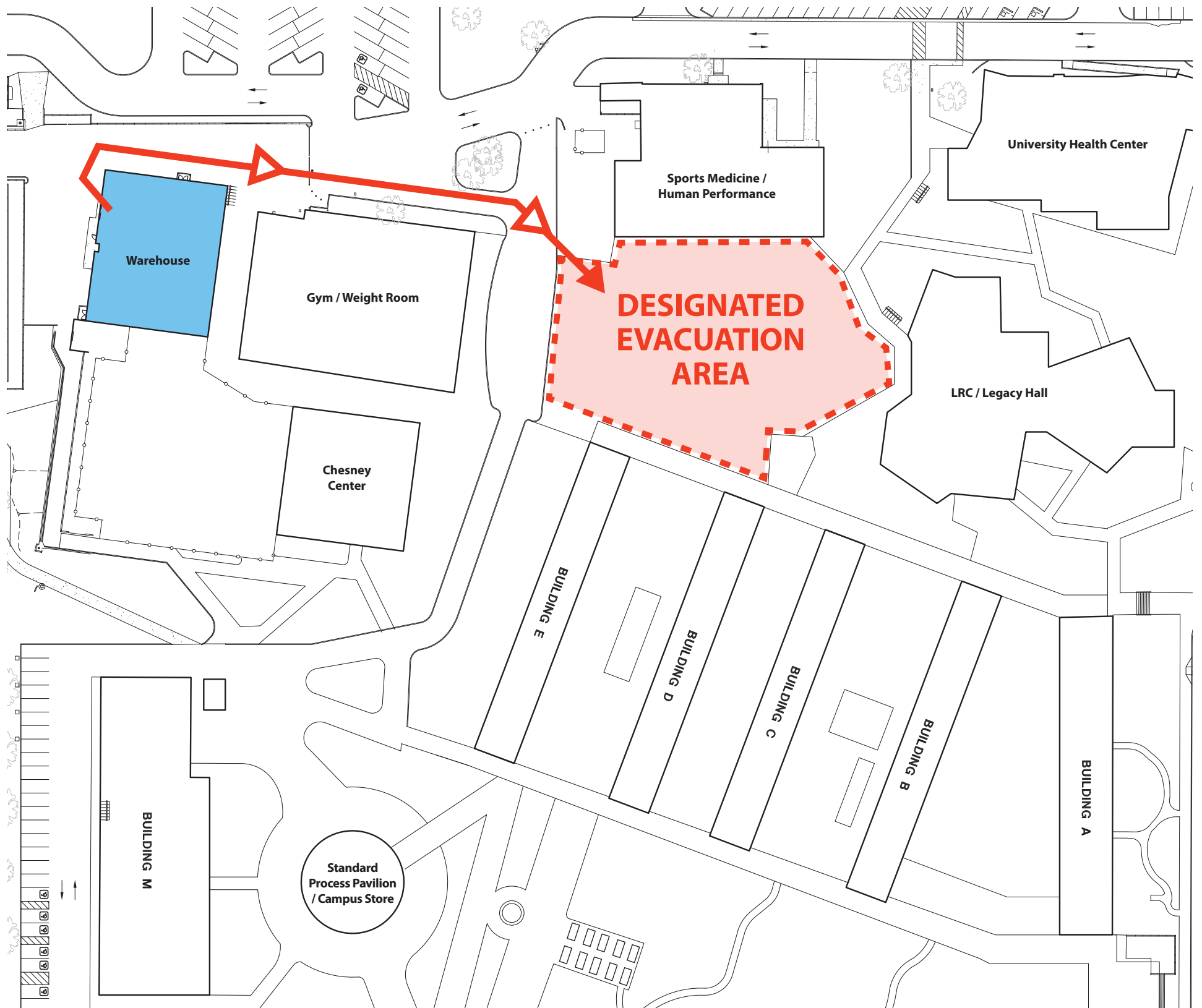




## Remain at least 25' away from buildings and other objects

- In an emergency situation evacuate the buildings and proceed to the designated evacuation area
- Proceed to the designated evacuation area safely and group together according to building letter
- In an emergency situation take emergency supply kits from your building to evacuation area
- If safe, assist individuals that may have mobility/accessibility issues to evacuation area
- All persons must notify emergency personnel and building coordinator(s) if leaving the evacuation area or campus before an "all clear" has been given
- Campus Safety will notify the building coordinators when it is safe to return to your building

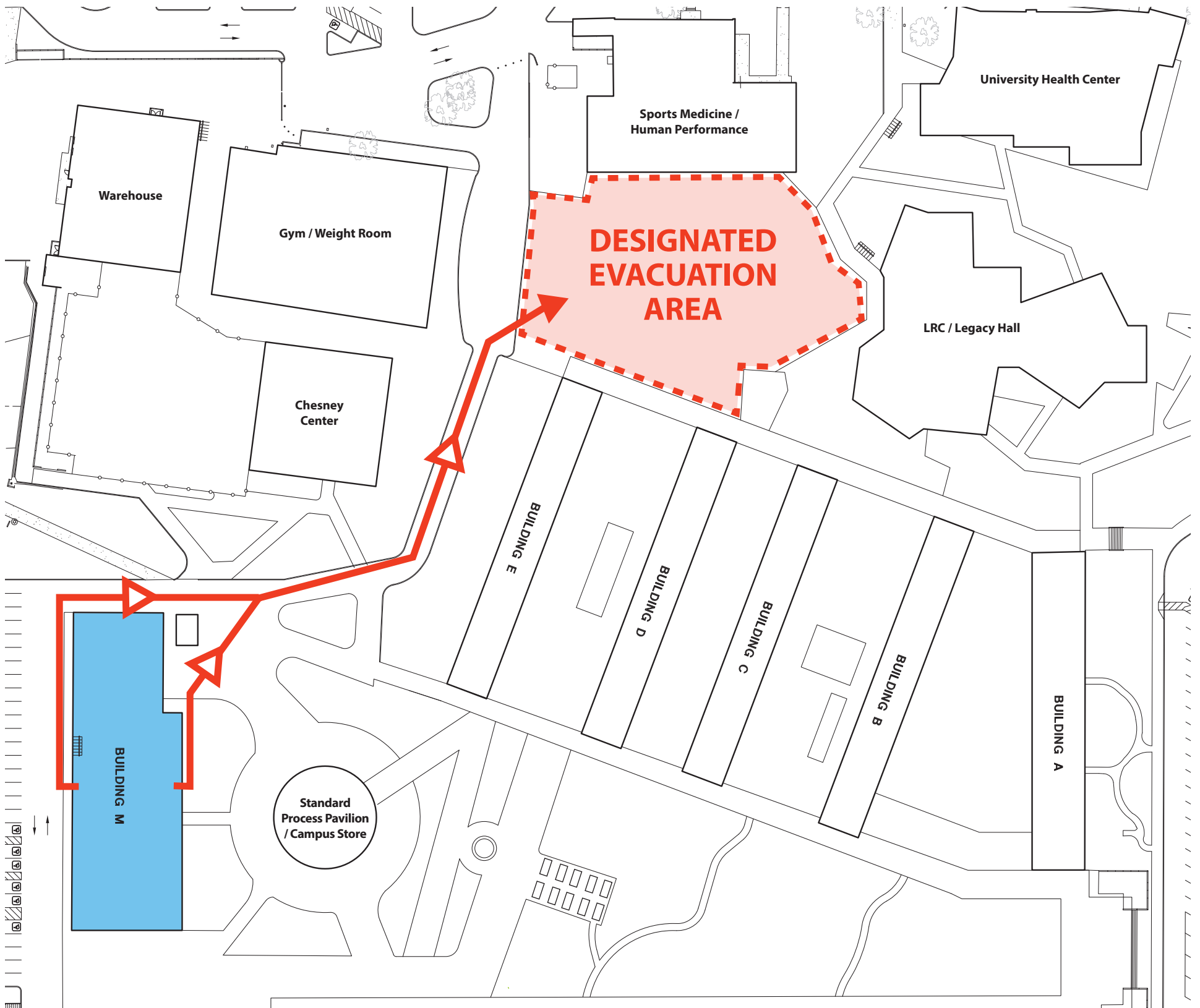




## Remain at least 25' away from buildings and other objects

- In an emergency situation evacuate the buildings and proceed to the designated evacuation area
- Proceed to the designated evacuation area safely and group together according to building letter
- In an emergency situation take emergency supply kits from your building to evacuation area
- If safe, assist individuals that may have mobility/accessibility issues to evacuation area
- All persons must notify emergency personnel and building coordinator(s) if leaving the evacuation area or campus before an "all clear" has been given
- Campus Safety will notify the building coordinators when it is safe to return to your building



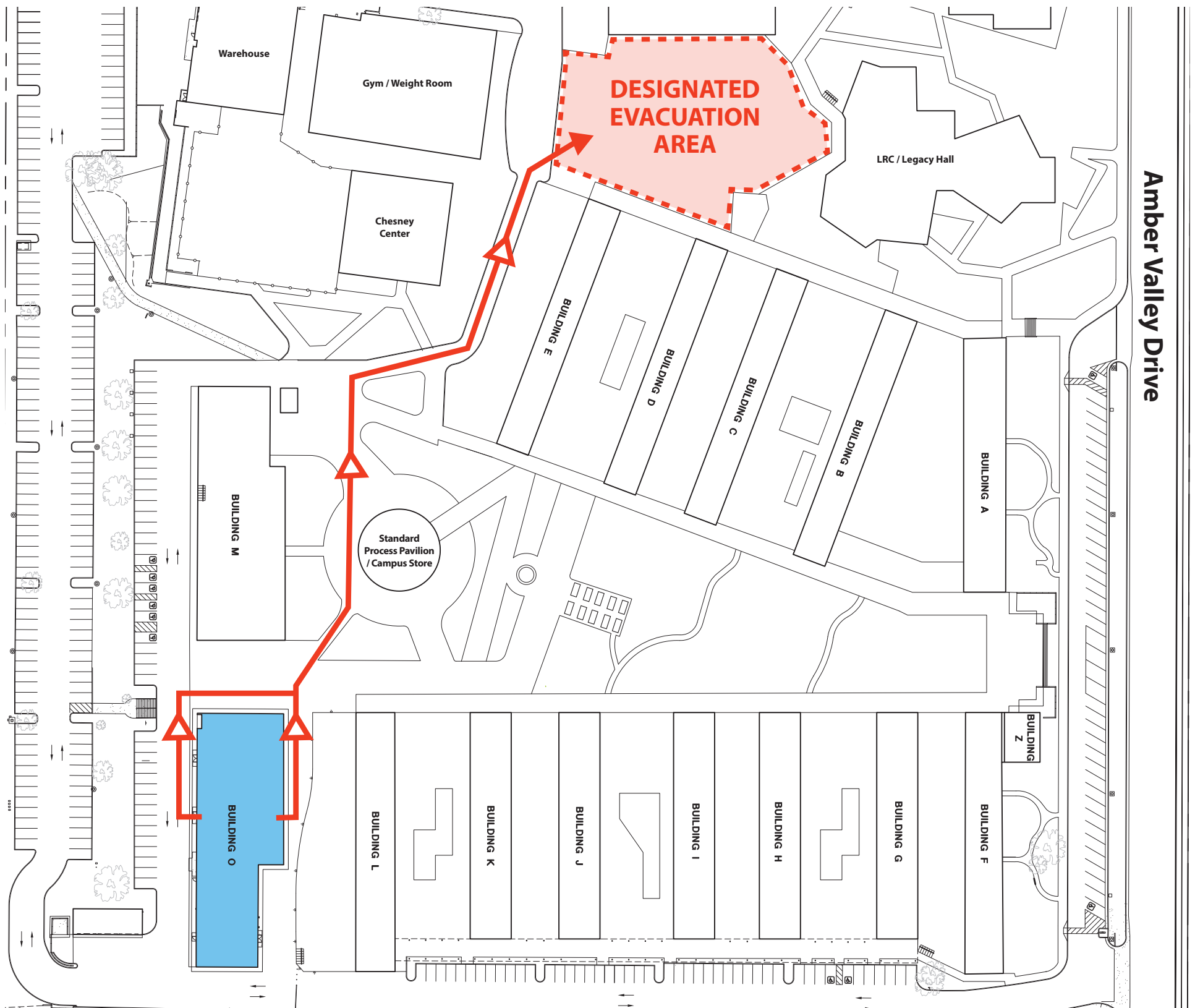


## Remain at least 25' away from buildings and other objects

- In an emergency situation evacuate the buildings and proceed to the designated evacuation area
- Proceed to the designated evacuation area safely and group together according to building letter
- In an emergency situation take emergency supply kits from your building to evacuation area
- If safe, assist individuals that may have mobility/accessibility issues to evacuation area
- All persons must notify emergency personnel and building coordinator(s) if leaving the evacuation area or campus before an "all clear" has been given
- Campus Safety will notify the building coordinators when it is safe to return to your building



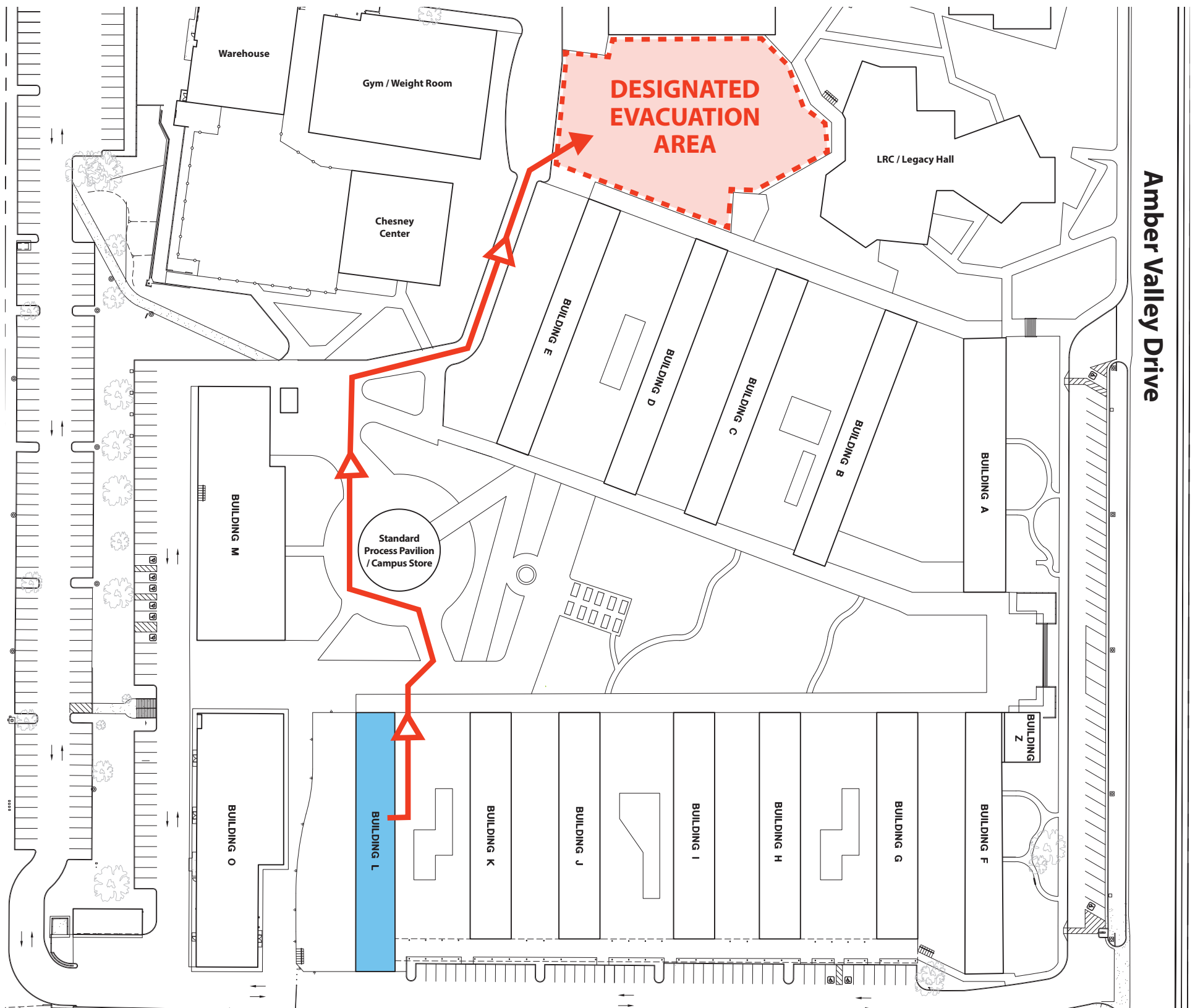




## Remain at least 25' away from buildings and other objects

- In an emergency situation evacuate the buildings and proceed to the designated evacuation area
- Proceed to the designated evacuation area safely and group together according to building letter
- In an emergency situation take emergency supply kits from your building to evacuation area
- If safe, assist individuals that may have mobility/accessibility issues to evacuation area
- All persons must notify emergency personnel and building coordinator(s) if leaving the evacuation area or campus before an "all clear" has been given
- Campus Safety will notify the building coordinators when it is safe to return to your building

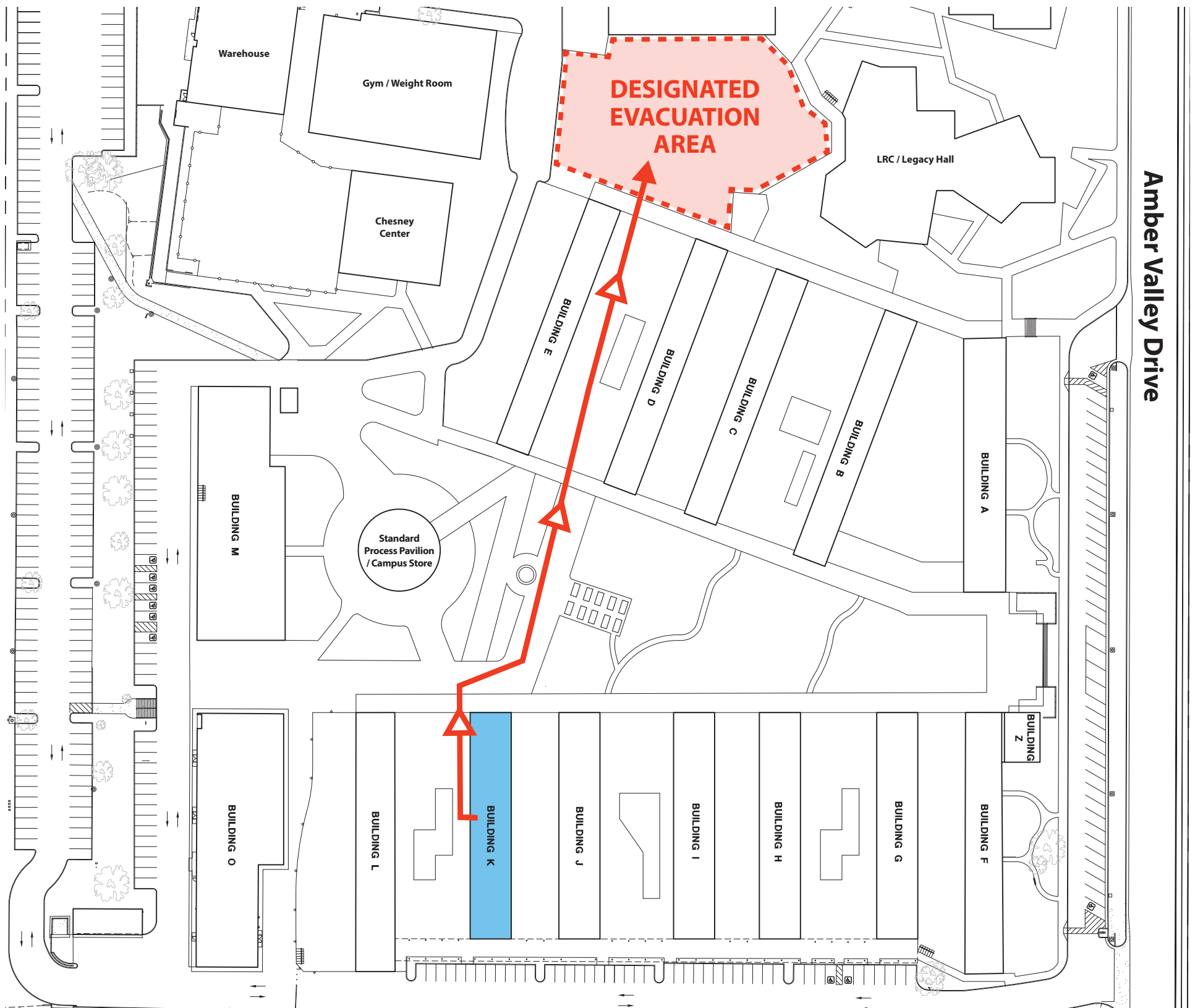




## Remain at least 25' away from buildings and other objects

- In an emergency situation evacuate the buildings and proceed to the designated evacuation area
- Proceed to the designated evacuation area safely and group together according to building letter
- In an emergency situation take emergency supply kits from your building to evacuation area
- If safe, assist individuals that may have mobility/accessibility issues to evacuation area
- All persons must notify emergency personnel and building coordinator(s) if leaving the evacuation area or campus before an "all clear" has been given
- Campus Safety will notify the building coordinators when it is safe to return to your building

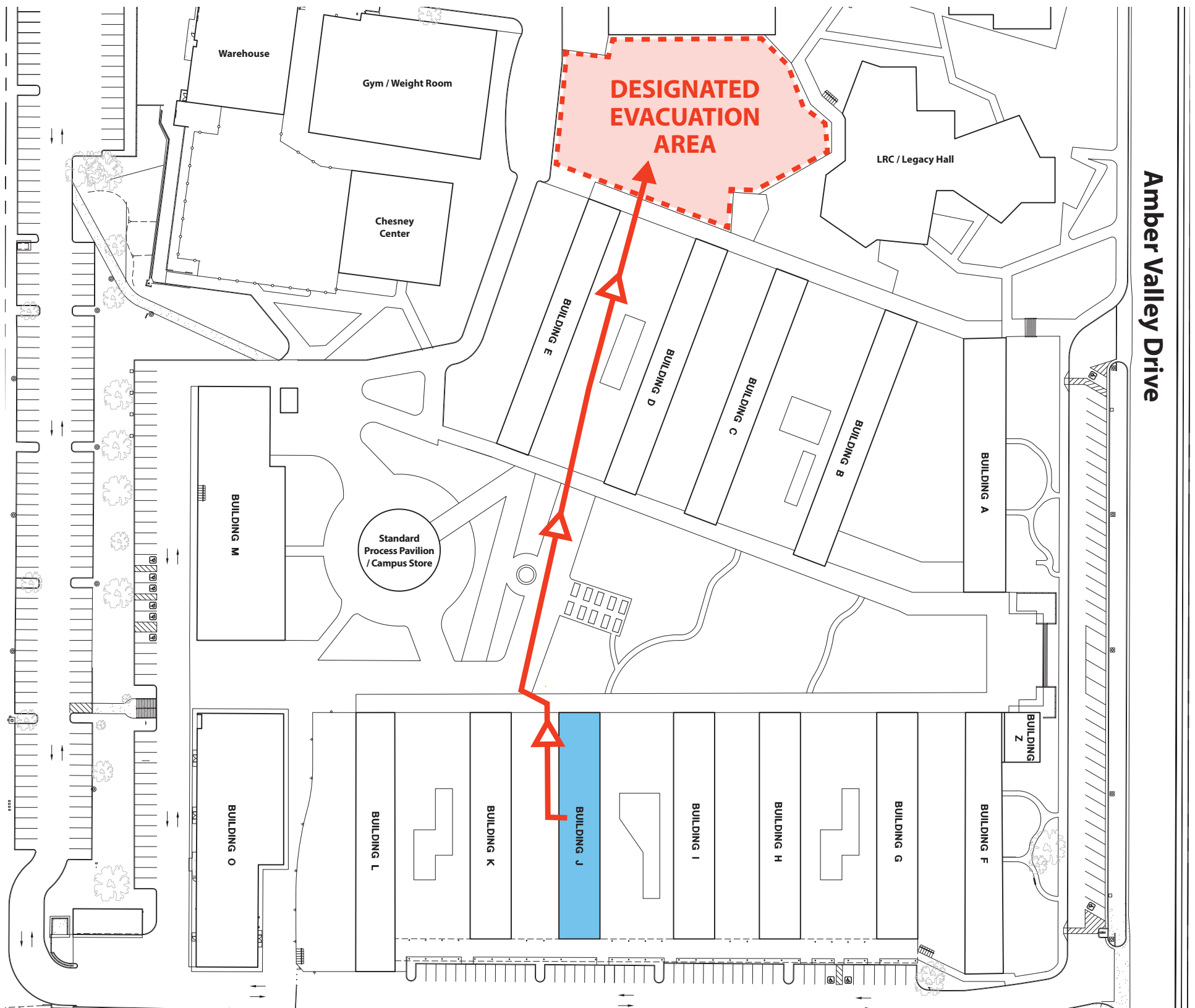




## Remain at least 25' away from buildings and other objects

- In an emergency situation evacuate the buildings and proceed to the designated evacuation area
- Proceed to the designated evacuation area safely and group together according to building letter
- In an emergency situation take emergency supply kits from your building to evacuation area
- If safe, assist individuals that may have mobility/accessibility issues to evacuation area
- All persons must notify emergency personnel and building coordinator(s) if leaving the evacuation area or campus before an "all clear" has been given
- Campus Safety will notify the building coordinators when it is safe to return to your building



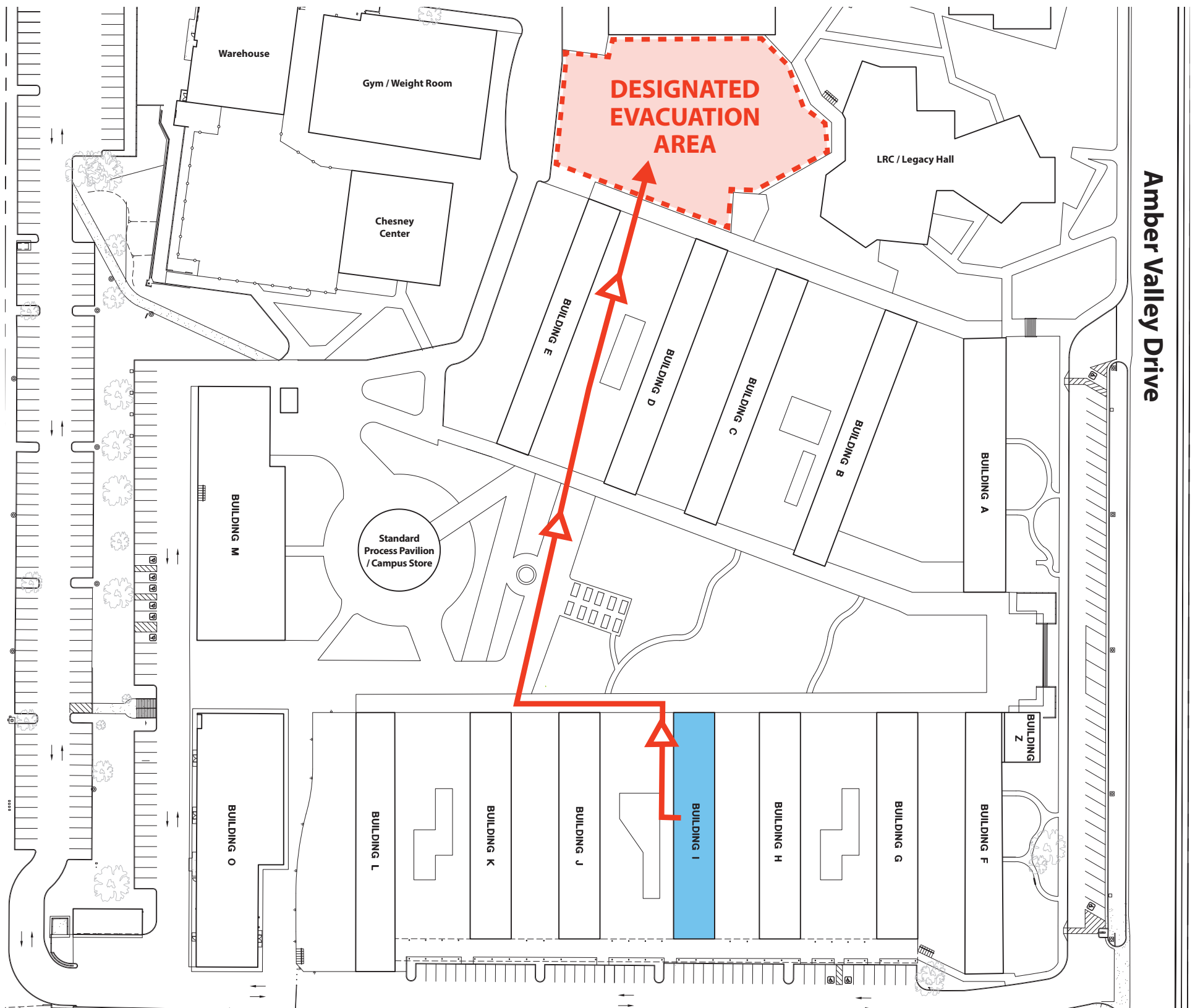


## Remain at least 25' away from buildings and other objects

- In an emergency situation evacuate the buildings and proceed to the designated evacuation area
- Proceed to the designated evacuation area safely and group together according to building letter
- In an emergency situation take emergency supply kits from your building to evacuation area
- If safe, assist individuals that may have mobility/accessibility issues to evacuation area
- All persons must notify emergency personnel and building coordinator(s) if leaving the evacuation area or campus before an "all clear" has been given
- Campus Safety will notify the building coordinators when it is safe to return to your building



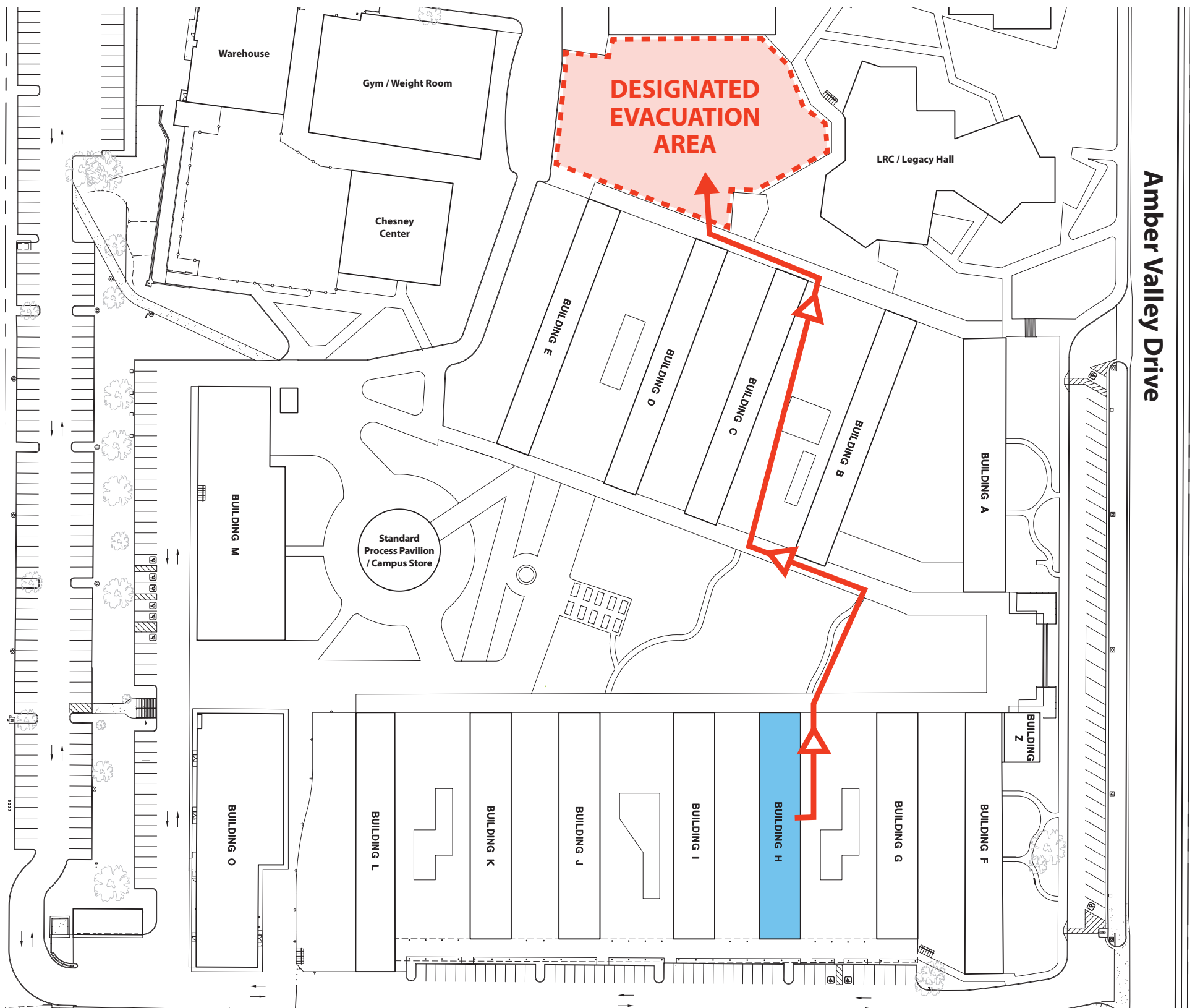




## Remain at least 25' away from buildings and other objects

- In an emergency situation evacuate the buildings and proceed to the designated evacuation area
- Proceed to the designated evacuation area safely and group together according to building letter
- In an emergency situation take emergency supply kits from your building to evacuation area
- If safe, assist individuals that may have mobility/accessibility issues to evacuation area
- All persons must notify emergency personnel and building coordinator(s) if leaving the evacuation area or campus before an "all clear" has been given
- Campus Safety will notify the building coordinators when it is safe to return to your building

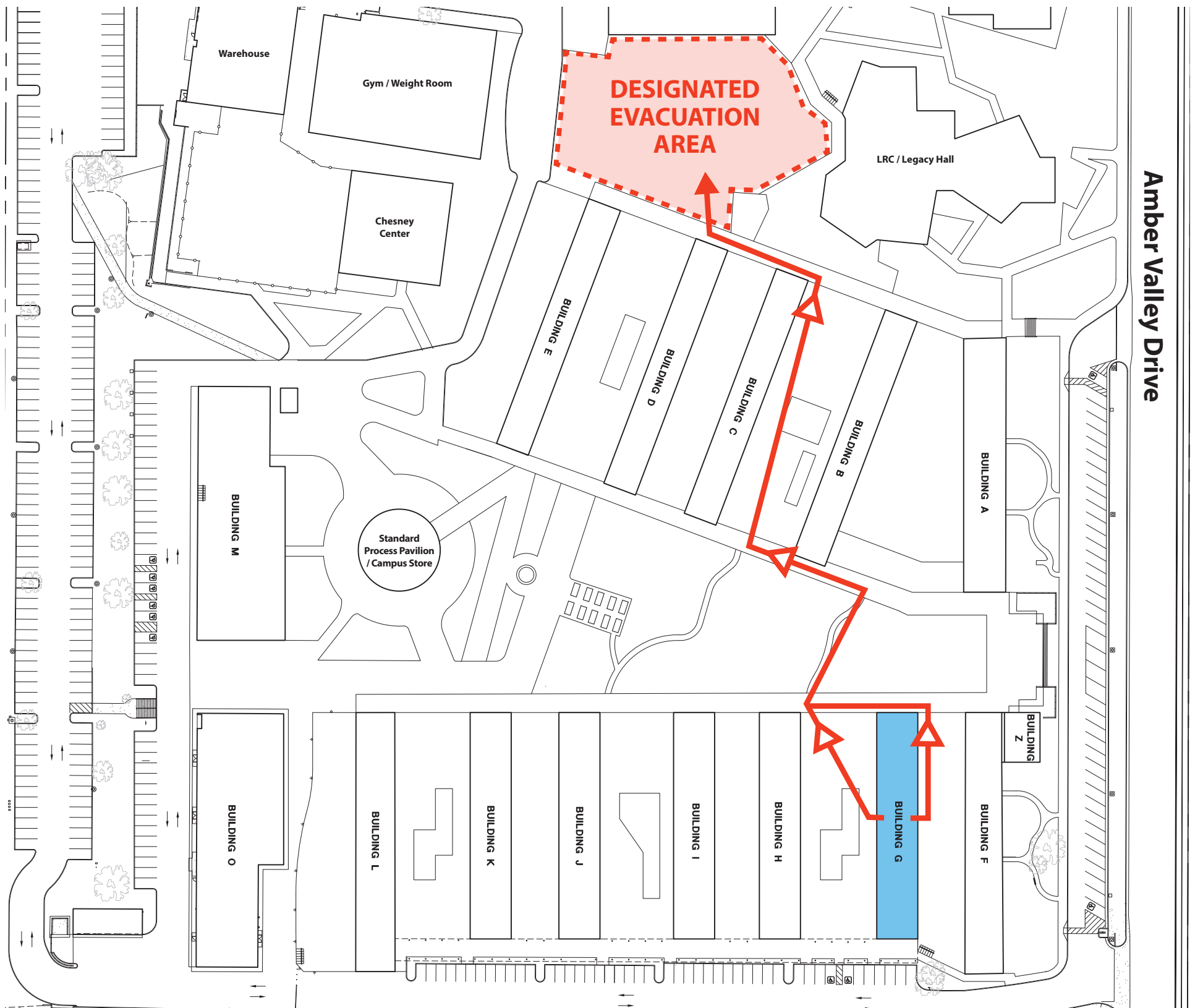




## Remain at least 25' away from buildings and other objects

- In an emergency situation evacuate the buildings and proceed to the designated evacuation area
- Proceed to the designated evacuation area safely and group together according to building letter
- In an emergency situation take emergency supply kits from your building to evacuation area
- If safe, assist individuals that may have mobility/accessibility issues to evacuation area
- All persons must notify emergency personnel and building coordinator(s) if leaving the evacuation area or campus before an "all clear" has been given
- Campus Safety will notify the building coordinators when it is safe to return to your building

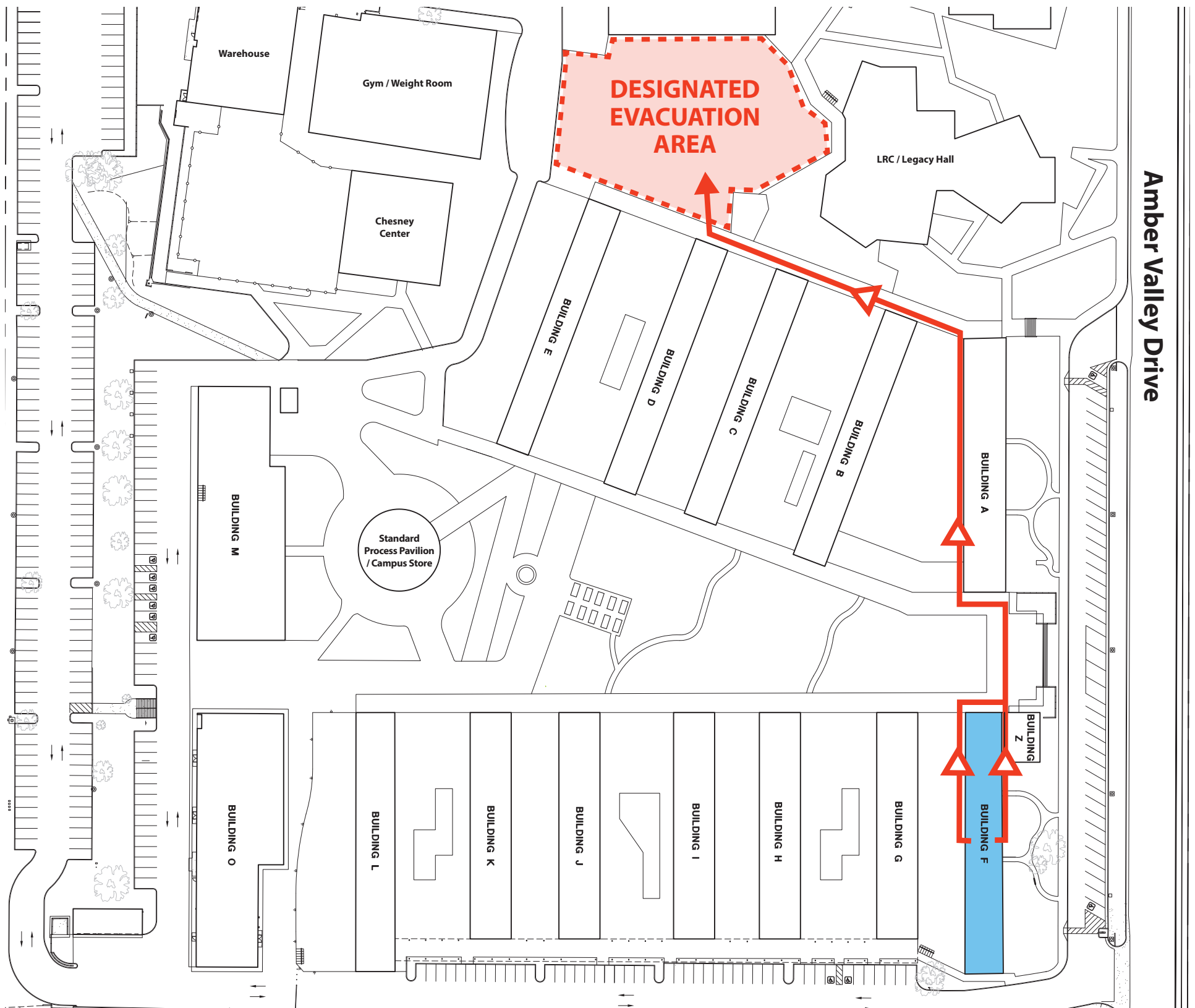




## Remain at least 25' away from buildings and other objects

- In an emergency situation evacuate the buildings and proceed to the designated evacuation area
- Proceed to the designated evacuation area safely and group together according to building letter
- In an emergency situation take emergency supply kits from your building to evacuation area
- If safe, assist individuals that may have mobility/accessibility issues to evacuation area
- All persons must notify emergency personnel and building coordinator(s) if leaving the evacuation area or campus before an "all clear" has been given
- Campus Safety will notify the building coordinators when it is safe to return to your building



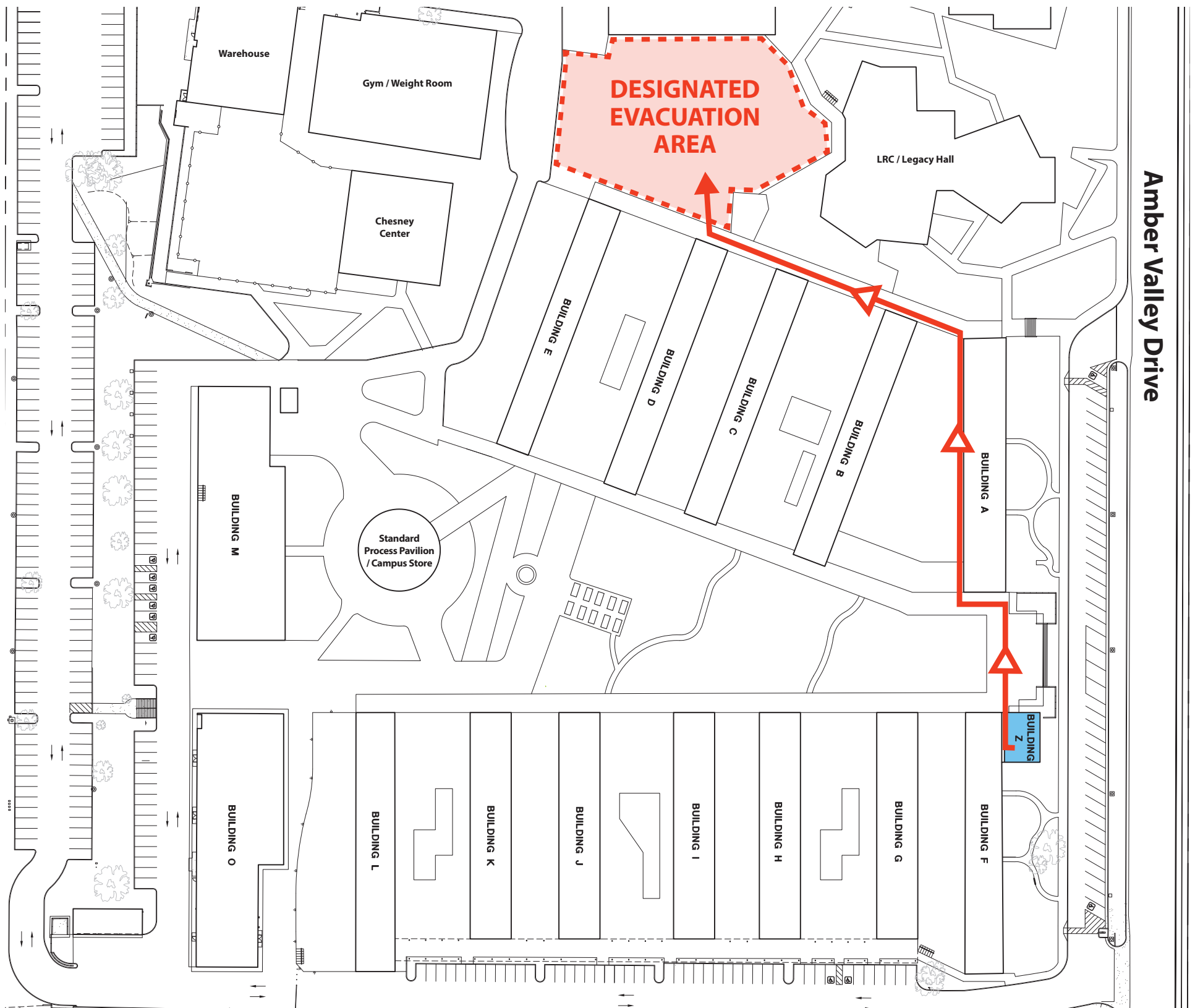


## Remain at least 25' away from buildings and other objects

- In an emergency situation evacuate the buildings and proceed to the designated evacuation area
- Proceed to the designated evacuation area safely and group together according to building letter
- In an emergency situation take emergency supply kits from your building to evacuation area
- If safe, assist individuals that may have mobility/accessibility issues to evacuation area
- All persons must notify emergency personnel and building coordinator(s) if leaving the evacuation area or campus before an "all clear" has been given
- Campus Safety will notify the building coordinators when it is safe to return to your building







## Remain at least 25' away from buildings and other objects

- In an emergency situation evacuate the buildings and proceed to the designated evacuation area
- Proceed to the designated evacuation area safely and group together according to building letter
- In an emergency situation take emergency supply kits from your building to evacuation area
- If safe, assist individuals that may have mobility/accessibility issues to evacuation area
- All persons must notify emergency personnel and building coordinator(s) if leaving the evacuation area or campus before an "all clear" has been given
- Campus Safety will notify the building coordinators when it is safe to return to your building

